

Be Prepared for Foreign Animal Diseases

Clinical Signs of Classical Swine Fever and African Swine Fever

The clinical signs of Classical Swine Fever (CSF) and African Swine Fever (ASF) are similar to other domestic diseases such as Porcine Circovirus Associated Disease (PCVAD), erysipelas, pasteurellosis, Streptococcosis and Salmonellosis.

Both CSF and ASF have acute and chronic forms, with disease incubation periods from 5 to 15 days or longer. Pigs infected with a peracute form of either disease can die suddenly with no clinical signs. Other affected pigs may be off feed, have high fevers (up to 107° F), and exhibit one or more of the following clinical signs:

- ▶ Diarrhea
- ▶ Vomiting
- ▶ Irritated, crusty eyes (CSF only)
- ▶ Red, blotchy skin
- ▶ Hind limb weakness (CSF only)
- ▶ Abortions, stillbirths, weak litters (CSF only)
- ▶ Tremors or convulsions in newborn piglets (CSF only)

Pigs affected with the chronic forms of CSF exhibit prolonged or transient fevers that are unresponsive to treatment, stunted growth, and loss of body condition. Chronically infected animals will eventually die.

The clinical similarity of CSF and ASF to endemic domestic diseases makes it essential that your herd veterinarian submit tissue samples to the diagnostic laboratory for an accurate diagnosis when these clinical signs are present.



Bloody diarrhea in pigs infected with African Swine Fever.



Diarrhea on the hip and pin point hemorrhages on the tail of a pig infected with Classical Swine Fever.



Severe hemorrhages in the skin cause the dark red blotchy appearance of the tip of the ear and lower edges.



Multiple hemorrhages in the skin cause the red blotchy appearance of the tail and leg.

Clinical Signs of Vesicular Diseases

The clinical signs of Foot and Mouth Disease, Swine Vesicular Disease, Vesicular Stomatitis and vesicular exanthema of swine look very similar. These diseases generally incubate between 2 and 14 days and spread very rapidly through a herd. Clinical signs are usually dramatic and include:

- ▶ High fever of short duration
- ▶ Reluctance to eat (off feed)
- ▶ Whole or ruptured blisters (vesicles) on the mouth or snout
- ▶ Whole or ruptured blisters (vesicles) where the skin meets the claw of the foot (coronary band) or between the toes
- ▶ Severe lameness and pain when pigs walk
- ▶ Reluctance to get up
- ▶ Abortions and death of piglets may occur

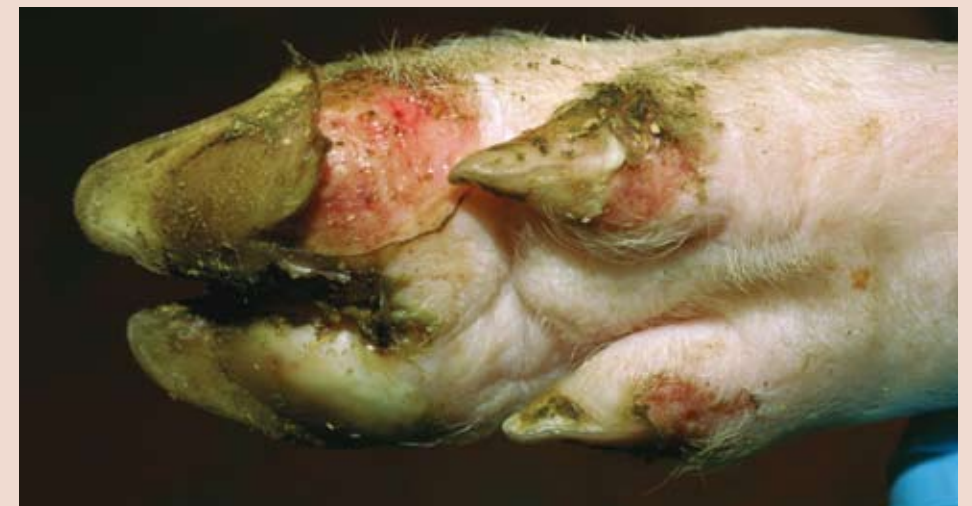
Producers should always be highly suspicious that a foreign animal disease may exist when blisters appear on the mouth, snout, coronary band or between the toes of swine. Producers should always report the presence of blisters to their herd veterinarian or state animal health authority as they are not commonly associated with domestic diseases and are good indicators of a potential foreign animal disease.



A vesicle has ruptured on the tip of the snout exposing the ulcer that has formed underneath the flap of dead skin.



An ulcer remains on the snout where a vesicle has ruptured.



Ruptured vesicles have left ulcers that are raw and painful; the claws and dew claws are in the process of sloughing.



A vesicle fills with fluid along the coronary band; a vesicle has ruptured leaving a fresh ulcer at the edge of the claw.

Photos provided by Visual Information Services-FSSI, Plum Island Animal Disease Center, Department of Homeland Security.

On the lookout for Foreign Animal Diseases

Anytime you see unexplained mortalities or morbidity, animals not responding to routine treatments or unusual signs of disease, contact your herd veterinarian. These circumstances warrant a herd examination and submission of diagnostic samples to identify the cause. This is particularly important if you feed

table scraps or meat products, if your pigs have been exposed to feral hogs or other wildlife, or if you have had visitors from a foreign country recently.

Preparation and information needed to report a potential foreign animal disease outbreak:

Step 1. Gather critical information

Premises ID Number for site(s) experiencing the problem: _____

The complete street address for this site is: _____

Premises ID Number of the pigs' source herd(s): _____

If pigs from this site have been moved or sold over the last 30 days, the Premises ID Number of their destination(s) is _____

Contact information for person in charge of this site:

Name: _____

Cell: _____

Office: _____

Contact information for the herd veterinarian:

Name: _____

Cell: _____

Office: _____

Step 2: Call state animal health authorities

State Animal Health Official (name): _____

Phone: _____

Federal Area Veterinarian In Charge (name): _____

Phone: _____

Step 3: Provide a brief history of the affected animals

◆ Health movements, additions, suspicious activities, feed source, exposure to feral swine or other animals, foreign workers or visitors, recent travel

◆ Describe the signs you are seeing: blisters, number sick, number dead, high fever, skin discolorations, scours

Step 4: After the call, organize and review

◆ Animal movement records to, or from, affected premises

◆ Feed manufacture and ingredient records

◆ Treatment records

◆ Carcass disposal records

◆ Visitor log for the affected premises

◆ Biosecurity protocols

Employee movement record (on and off the site)

Equipment movement record

Step 5: Ask for further instructions on

◆ Biosecurity measures for the herd

◆ Biosecurity measures for employees

◆ Restrictions on the movements of animals, feed, equipment and people.

For suspicious activities, vandalism, or animal tampering

◆ Leave the scene undisturbed

◆ Call local law enforcement (phone: _____)

◆ Report the incident to state animal health authorities.